

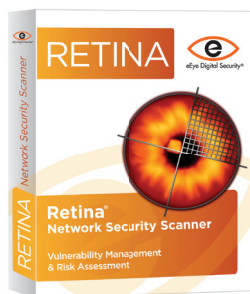
There have been few changes on the vulnerability assessment landscape, but the field is maturing, converging and gaining depth rapidly, says **Peter Stephenson**.

This was an interesting year for our vulnerability assessment Group Test. Last year, we separated application vulnerability assessment from network vulnerability assessment. This year, we grouped them together. This revealed a few interesting differences.

The primary difference, strategically, is that network vulnerability assessment tools are converging with penetration testing tools to provide both capabilities in the same tool. This is very important in my view because, properly used, penetration testing is an extension of vulnerability assessment. In a

proper network security assessment, one begins with the large view and progresses toward the specific. Two years ago, there were no solid combination tools. Last year, we had a couple that got pretty close. This year, we had solid entries that are really single security assessment tools.

Retina



Vendor eEye Digital Security

Price \$575 for 32 IPs

Contact www.eeye.com

Retina Network Security Scanner provides multiplatform vulnerability management. Retina identifies known and zero-day vulnerabilities and provides security risk assessment, enabling security best practices, policy enforcement and compliance with regulatory audits. This product analyzes specific pieces of the operating system, applications and policies. The tool targets high-risk host components and how a cybercriminal could potentially leverage them for malicious activity.

This product is a quick and simple install. The installation application itself is a small executable that launches a short setup wizard. After the setup is complete, management and scanning is done through the Retina application. The interface of the application has the feel of Windows Explorer so it is comfortable and easy to navigate. Setting up and configuring scans is also simple and intuitive. This product is also available as an appliance with the application already installed.

Retina provides multiplatform network discovery and scalable vulnerability assessment for any size network environment. This product can discover network assets, scan them for vulnerabilities, give remediation information and provide a solid set of reports, along with regulatory compliance standards, such as *SOX*, *HIPAA*, *GLBA* and *PCI*. This distributed system can also be controlled with REM, eEye's central management console, to form complete threat management coverage.

Documentation is provided in the form of two PDF manuals: an installation guide and a user guide. Both of these guides contain

numerous screen shots and step-by-step instructions.

The company provides three levels of support options, all with varying support coverage. Standard support is included with the purchase of Retina and provides eight hours a day/five days a week phone and email technical support, as well as access to the web knowledge base and customer download portal.

At a price starting at \$575 for 32 IPs, this product is a great value for the money for almost any size environment. It provides a lot of great functionality that is easy to use and manage, all at a reasonable price.

SC MAGAZINE RATING

Features	★★★★★
Ease of use	★★★★★
Performance	★★★★★
Documentation	★★★★★
Support	★★★★★
Value for money	★★★★★

OVERALL RATING ★★★★★

Strengths Solid feature set with easy-to-use scanning controls.

Weaknesses None that we found.

Verdict An excellent vulnerability scanner at a good price. This one gets our Best Buy.



An excellent vulnerability scanner at a good price. This one gets our Best Buy.

Peter Stephenson



eEye Digital Security®

www.eEye.com